



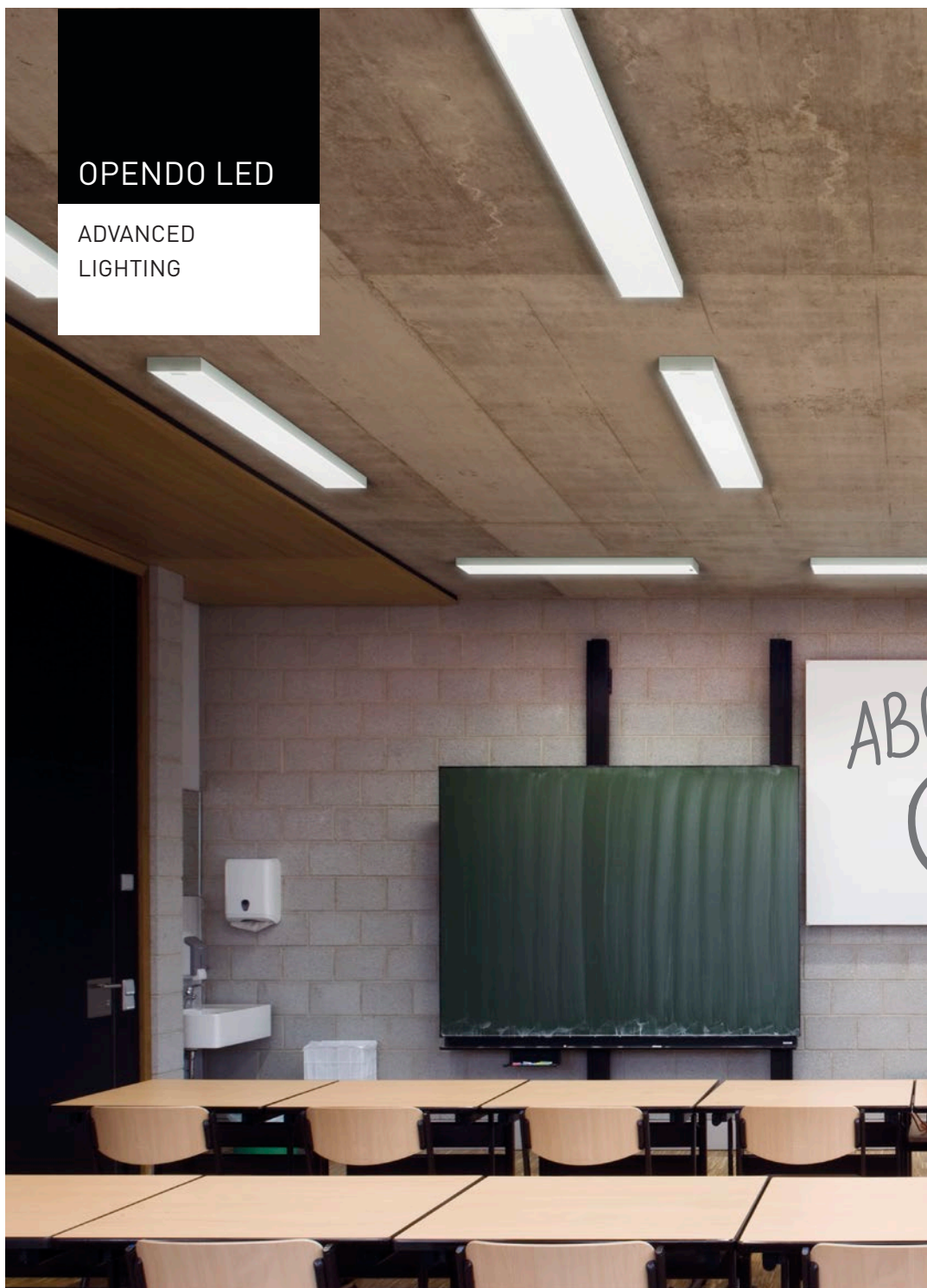
**TRI LUX**  
SIMPLIFY YOUR LIGHT.

OPENDO LED

Advanced Lighting

# OPENDO LED

ADVANCED  
LIGHTING

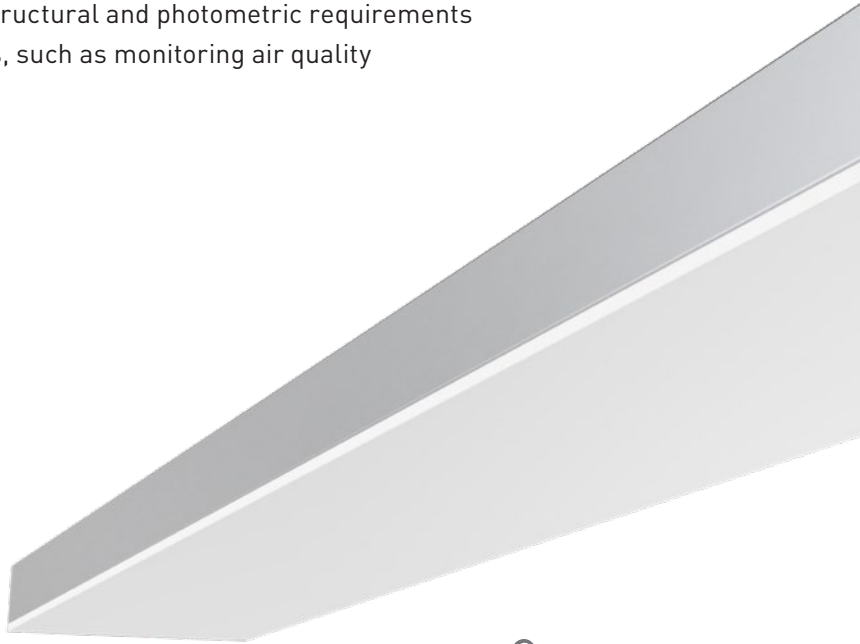




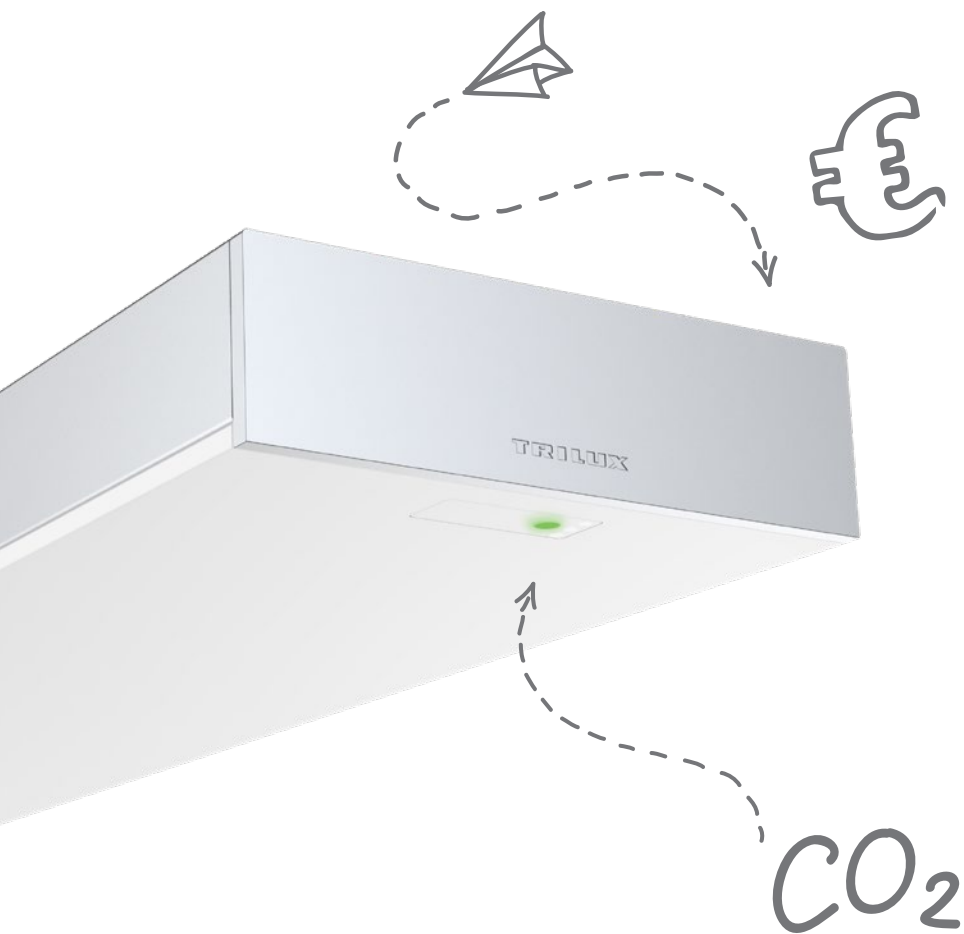
The educational sector places the highest demands on lighting technology and quality, sometimes with complex structural conditions on site. Perfectly adjusted: Thanks to customised light distributions – such as asymmetric blackboard lighting – Opendo LED meets all the requirements for future-proof and sustainable school lighting:

### **The challenge**

- Efficient refurbishment of obsolete conventional luminaire systems
- Tight cost framework with high demands on quality and efficiency
- Specific structural and photometric requirements
- New tasks, such as monitoring air quality



**LIKE**



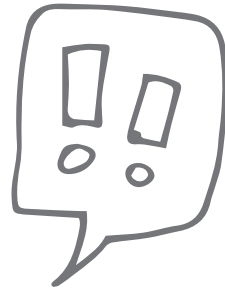
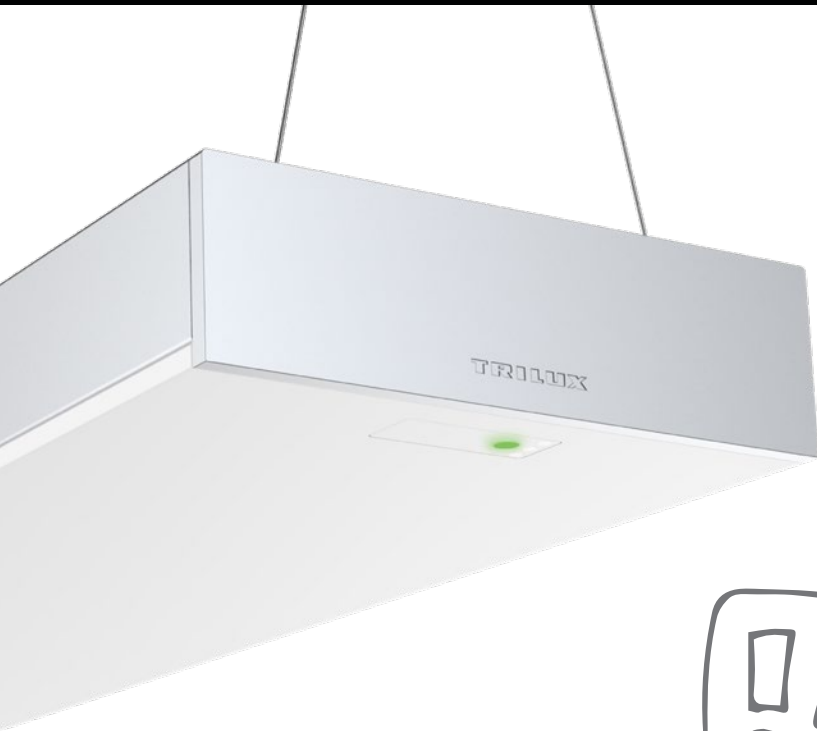
### **The solution**

- Customised solutions for all areas in schools and offices
- High-quality planar light across the entire width of the luminaire
- Refurbishment and maintenance-friendly design
- Turnkey solutions with integrated functional modules, e.g. CO<sub>2</sub> sensors

QUALITY OF LIGHT

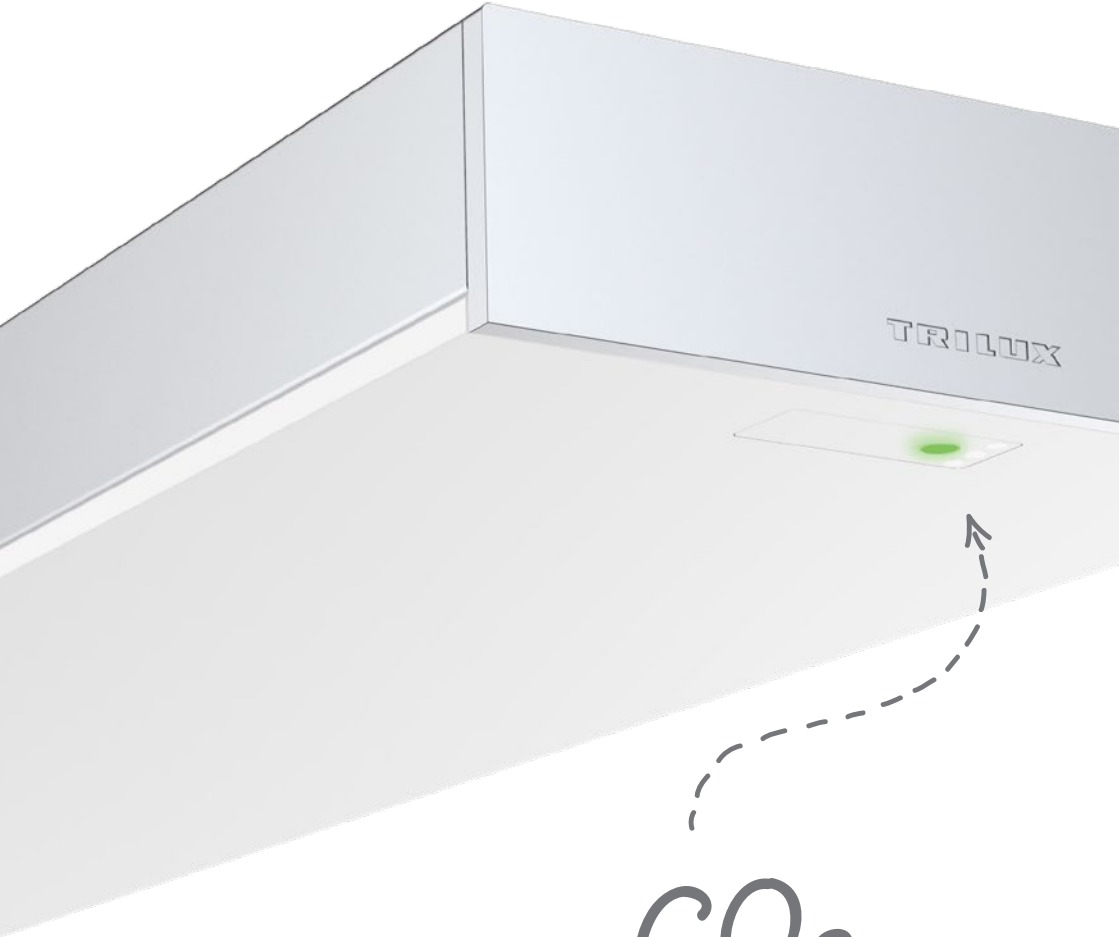


**FRESH**



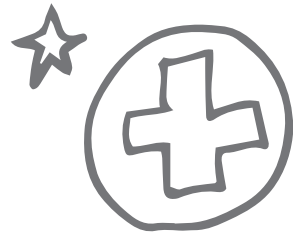
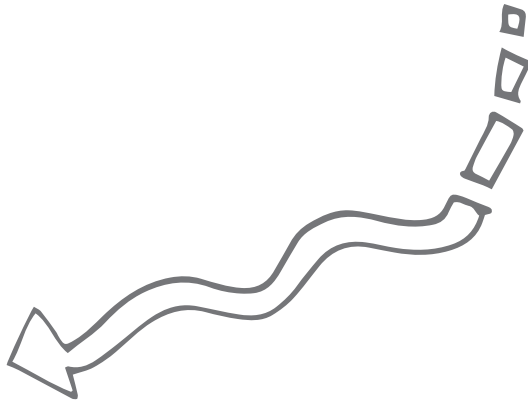
### **Enthusiasm across the board – full-surface light emission area**

Learning and working can be a beautiful experience, in terms of light and luminaire design, anyway: Opendo LED brings high-quality planar light and a new functional/attractive aesthetic to the education and office sector. One of its highlights is the light emission surface, which extends over the entire width of the luminaire and blends into an accentuated light edge around the sides.



CO<sub>2</sub>





### **Air quality in check at all times – added value with CO<sub>2</sub> sensors and more**

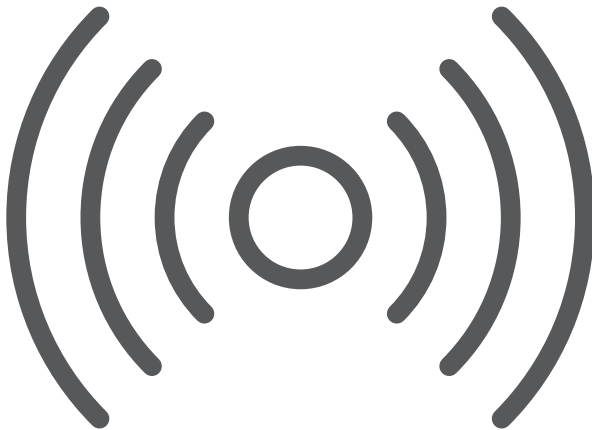
It is capable of much more than just providing light: Opendo LED enables simple networking and is available with integrated function modules on request. In addition to classic sensors for presence and daylight detection, “non-lighting” IoT components can also be integrated quickly and simply. One example are CO<sub>2</sub> sensors that monitor the air quality in the classrooms and display it via a traffic light system.



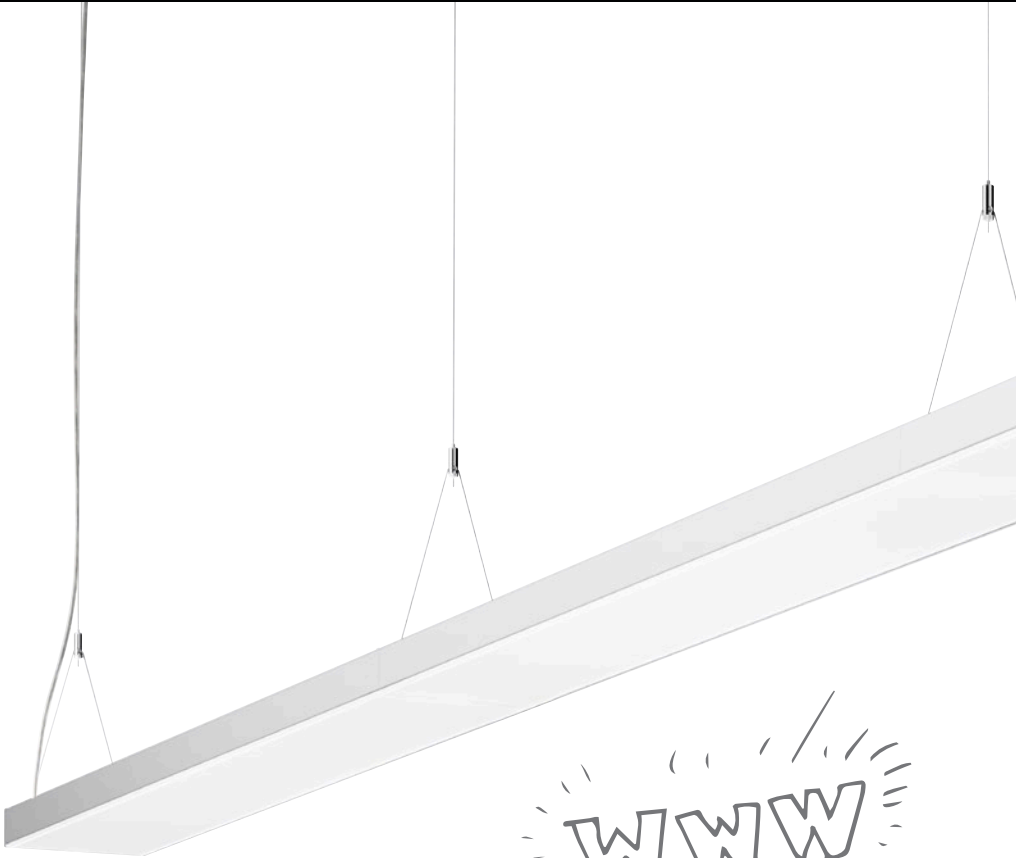


## **ADVANTAGES IN OPERATION**

High efficiency, low operating costs and excellent quality of light are just some of Opendo LED's strengths. The luminaire can be flexibly equipped with sensors, in particular a CO<sub>2</sub> sensor for measuring air quality. Especially sustainable: The control gear can be replaced without effort in the event of maintenance.



EXPERIENCE OPENDO LED

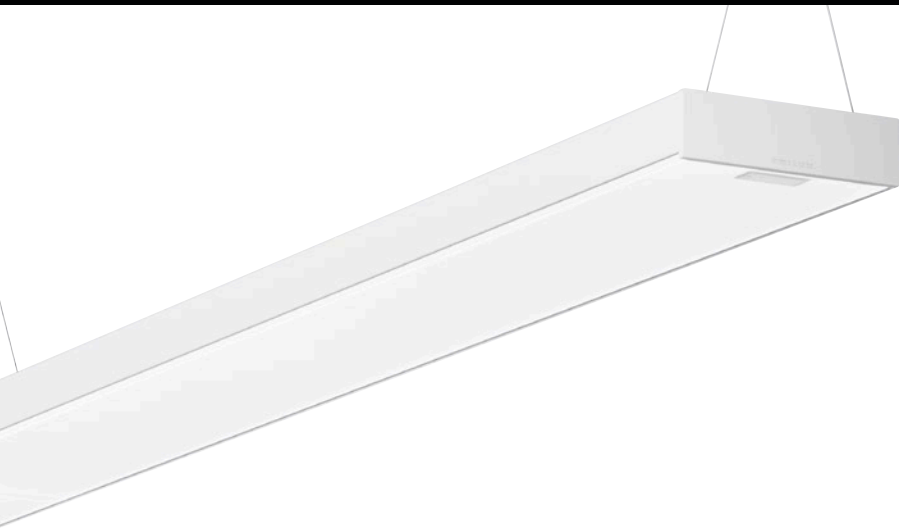


**Experience Opendo LED online and start planning immediately**

Experience Opendo LED online and start planning your next school or office project right away. Visit our website for more information and downloadable resources.

Get inspired now and start planning:  
**[www.trilux.com/opendo-led](http://www.trilux.com/opendo-led)**





### **Exclusive insights video**

Find out all the insights from the development of Opendo LED in the new TRILUX Talks video.



Watch now:

[www.trilux.com/triluxtalks-education](http://www.trilux.com/triluxtalks-education)



**TRILUX Light Snacks – small bites, big benefits**

Satisfy your hunger for knowledge with TRILUX Light Snacks. Let us inform you regularly in a short and compact form about everything important from the world of light.



Subscribe now:

[www.trilux.com/light-snacks](http://www.trilux.com/light-snacks)



**Individual light concepts and personal advice**

We would love to support you with your next Opendo LED project. Simply contact us:



**TRILUX GmbH & Co. KG**

Heidestraße · D-59759 Arnsberg  
Postfach 19 60 · D-59753 Arnsberg  
Tel. +49 29 32.3 01-0  
Fax +49 29 32.3 01-3 75  
[sales@trilux.com](mailto:sales@trilux.com)  
[www.trilux.com](http://www.trilux.com)

**TRILUX LIGHTING LIMITED**

TRILUX HOUSE, Winsford Way  
Boreham Interchange  
Chelmsford, Essex  
CM2 5PD  
Tel. +44 12 45.46 34 63  
Fax +44 12 45.46 26 46  
[info.co.uk@trilux.com](mailto:info.co.uk@trilux.com)  
[www.trilux.com](http://www.trilux.com)

**TRILUX Vertrieb GmbH**

Representative Office  
Building: 5EA, Office 808 & 810  
P.O. Box: 371040  
Dubai Airport Free Zone (DAFZA)  
Dubai, United Arab Emirates  
Tel. +971 4 6091991  
Fax: +971 4 6091826  
[middleeast@trilux.com](mailto:middleeast@trilux.com)  
[www.trilux.com/en](http://www.trilux.com/en)

**TRILUX Iluminación S.L.**

Avda. Manuel Rodríguez Ayuso 114  
Centro Empresarial Miralbueno  
Planta 1ª Local P-2  
E-50012 Zaragoza  
Tel. +34 976.46 22 00  
Fax: +34 976.77 40 61  
[info.es@trilux.com](mailto:info.es@trilux.com)  
[www.trilux.com](http://www.trilux.com)



