

TRILUX
SIMPLIFY YOUR LIGHT.

SANESCA LED



SANESCA LED

LIGHT FOR GREATER
WELL-BEING

Sanesca LED brings a sense of well-being into hospitals, rehabilitation and care and its purist design allows it to blend harmoniously into all kinds of interiors.

The lighting concept features maximum flexibility, enabling use in highly diverse areas – In patient rooms, the luminaire combines indirect distribution ambient light with direct reading light to support progressive and efficient patient care. The reading light is optimally aligned to the reading height of the user and was developed to prevent any direct glare for neighbours in adjacent beds.

Further versions for patients' and residents' rooms are also available with night light. The Sanesca LED design in corridor, relaxation or entrance areas is a pure wall luminaire.

SANESCA LED

LIGHT FOR BETTER
ORIENTATION

Station
GO



TRILUX has been working to improve light every day for over 100 years now. Today it is no longer a mere matter of developing innovative luminaires but one of comprehensive, intelligent lighting solutions for people. Sanesca LED features highly diverse application possibilities.

It is highly important that senior citizens in care facilities experience a sense of well-being in their new home, and that their quality of life is maintained in old age. Sanesca LED combines comfort and well-being with orientation and good visibility.

For hospital patients, outstanding medical care and high standards of equipment comfort are essential. Sanesca LED meets this demand while also effectively supporting hospital personnel in their work – the functional lighting provides maximum safety during the day with medical examinations and treatment at the patient bed for example.

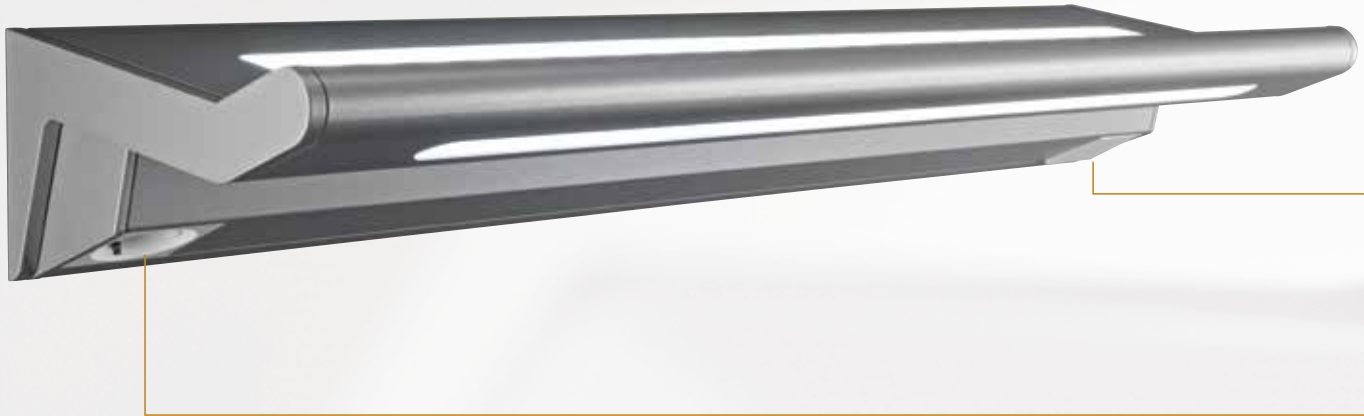
Sanesca W1, W2, W3

Ambient light, ambient and reading light, ambient, reading and night light without function module



Sanesca W3-1, W3-2

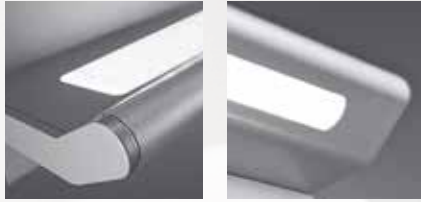
Ambient light, reading light and night light with small function module



Sanesca W4

Ambient light, reading/examination and night light with large function module





- Ambient light is switchable and dimmable (DALI), Active version (colour temperature adjustable lighting).
- Reading light is switchable.



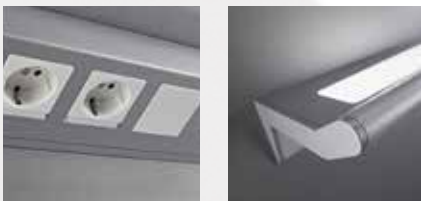
- Includes rocker switch or optional pull-cord switch.



- Includes socket, without labelling.
- Other versions with relay for bedside operating unit are available upon request.



- Examination light is switched separately to reading light via a push-button.



- Up to 6 components can be integrated in the large function module. Individual electrical versions and special equipment are available upon request.
- Further luminaire lengths are available upon request.

SANESCA LED

LIGHT AND FUNCTIONS



Simply configuration. Flexible use.

The Sanesca LED can be installed as a pure wall luminaire in corridors or used above the patient bed with or without a function module. The modular design enables the integration of sockets, data modules, simple nurse call and other functions.

Installed once. Continuous benefits.

A long service life, long maintenance cycles and high level of reliability mean the Sanesca LED is the ideal, energy-efficient and cost-efficient lighting solution for the easy care sector.

Simple cleaning. Simple maintenance.

Concealed screws and the absence of gaps that could collect dirt make the Sanesca LED particularly easy to clean. All maintenance work such as replacing the LED unit or control unit can be carried out simply and quickly.

Good quality of light. Uniform and glare-free.

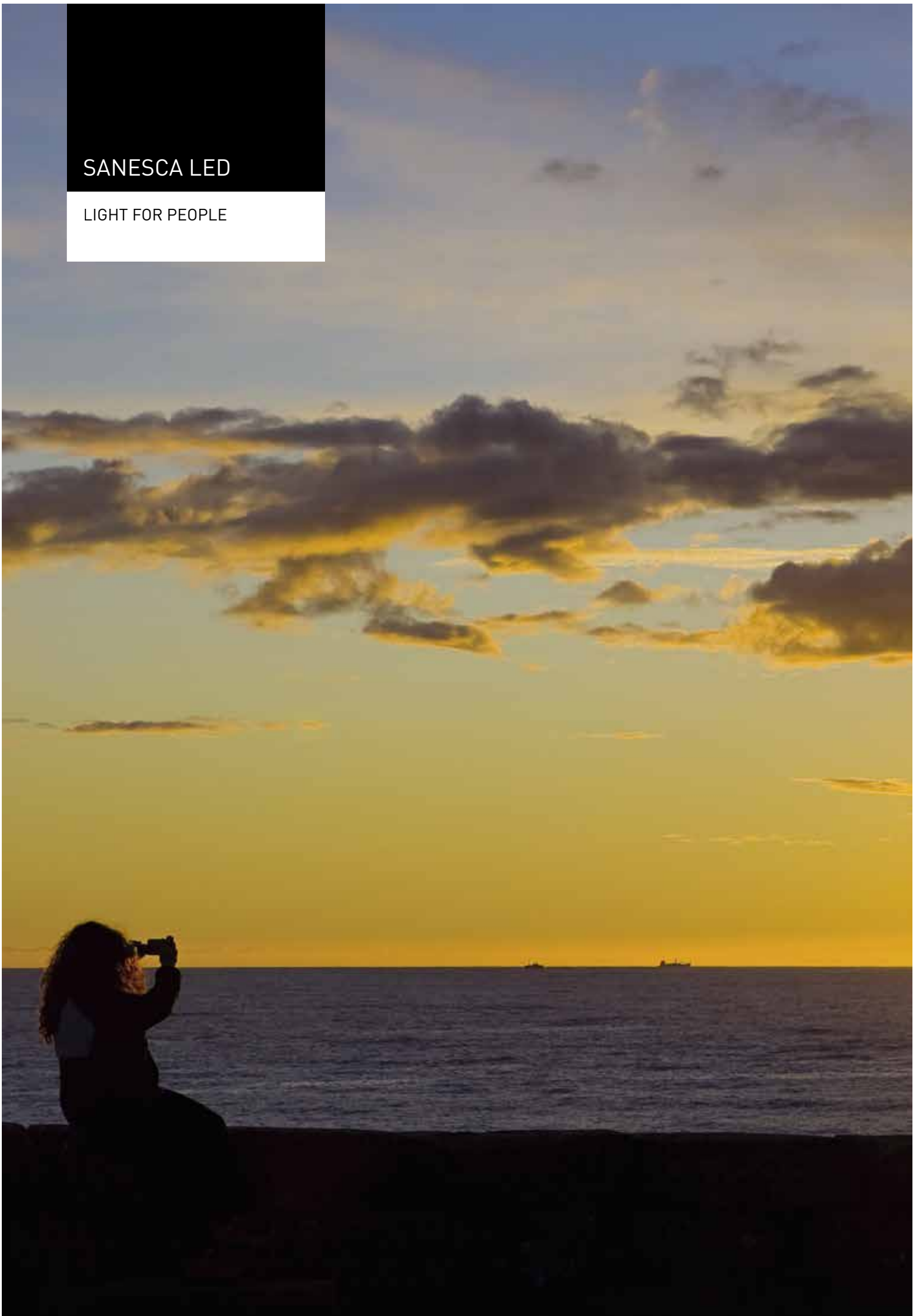
The Sanesca LED supplies indirect room light for ambient lighting and direct distribution, glare-free reading light that can be expanded to examination light with a further switching option. Sanesca LED optionally features an LED night light.

Activate and relax. For optimum support.

The Sanesca LED Active version supports the natural day/night rhythm of patients and residents and can also specifically contribute to either activation or relaxation.

SANESCA LED

LIGHT FOR PEOPLE



The influence of light on people can hardly be underestimated: the sun not only provides us with life but also influences our biological rhythm and feelings. Inspired by nature itself, Sanesca LED brings the positive effects of sunlight into buildings contributing to health-promoting atmospheres. The right light for all requirements, whether in hospitals, rehabilitation or care surroundings.

WW control

Supporting the natural daytime rhythm or specifically relaxing or activating – the TRILUX CWW touch panel enables simple control of the SANESCA LED ACTIVE.

The integrated automatic circadian sequence optimally supports the human day/night rhythm and colour mixing and brightness can also be manually set according to requirements. The intuitive touch panel enables freely selectable light scenes to be activated and the automatic sequence to be started.



Wall mounting with a GIRA 2-gang cover frame (included in scope of supply) together with a standard flush-mounted box.

Free definition of up to 4 light scenes

Freely definable colour temperature and brightness

Calling of a preset circadian daylight sequence; all parameters are pre-saved in the control unit. The iOS smartphone App (TRILUX CWW Programmer) enables expanded settings such as customising circadian sequences. Available via the Apple App store.

SANESCA LED

LIGHT AND DESIGN



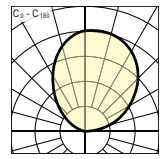
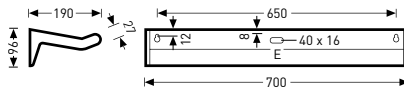
Patients in hospital and rehabilitation environments spend most of their time in patient rooms and when designing these rooms a sense of pleasantness and well-being is highly important. Good lighting is a benefit not just for patients but also for doctors and care personnel.

The Sanesca LED's ambient light creates a comfy atmosphere and good visual conditions and the reading light guides light individually onto the bed area without causing glare to adjacent beds or care personnel. Good orientation is ensured at night with a separately switchable LED night light.

The ambient lighting should be at least 100 lux and also avoid direct glare for patients (glare limitation of reading light < 1,000 cd/m²). Reading and simple patient examinations require 300 lux. Orientation lighting should be 5 lux to enable patients to find their way around the room.

Sanesca LED – precisely the right solution for any area.

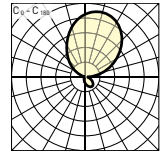
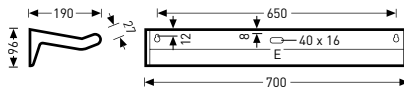
LED wall luminaires with ambient light, indirect distribution (without function module)



Reference	TOC	ETDD...	ET...		EEC	W	≈kg
White luminaire body							
• Sanesca W1 LED 2000-830...01	63 718...	...51	...40	1,900 lm	A++/A+/A	20	3.9
Sanesca W1 LED 2000-840...01	63 372...	...51	...40	2,000 lm	A++/A+/A	20	3.9
Silver-grey luminaire body							
Sanesca W1 LED 2000-830...03	63 719...	...51	...40	1,900 lm	A++/A+/A	20	3.9
Sanesca W1 LED 2000-840...03	63 373...	...51	...40	2,000 lm	A++/A+/A	20	3.9

• IK02/0.2 J 650 °C

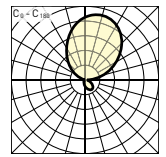
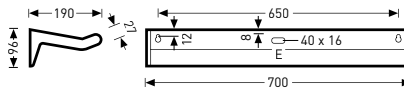
LED wall luminaires with indirect distribution ambient light and direct distribution reading light (without function module)



Reference	TOC	ETDD...	ET...		EEC	W	≈kg
White luminaire body, LED for colour temperature adaptable lighting							
• SanescaAct W2 4600...830 01	64 480...	...51	-	4,600 lm	A++/A+/A	40	4.7
SanescaAct W2 4600...840 01	64 481...	...51	-	4,600 lm	A++/A+/A	40	4.7
White luminaire body, LED							
Sanesca W2 LED 2600-830...01	63 374...	...51	...40	2,500 lm	A++/A+/A	26	3.9
Sanesca W2 LED 2600-840...01	63 375...	...51	...40	2,600 lm	A++/A+/A	26	3.9
Sanesca W2 LED 4600-830...01	63 360...	...51	...40	4,600 lm	A++/A+/A	48	3.9
Sanesca W2 LED 4600-840...01	63 361...	...51	...40	4,800 lm	A++/A+/A	48	3.9
Silver-grey luminaire body, LED for colour temperature adaptable lighting							
SanescaAct W2 4600...830 03	64 482...	...51	-	4,600 lm	A++/A+/A	40	4.7
SanescaAct W2 4600...840 03	64 483...	...51	-	4,600 lm	A++/A+/A	40	4.7
Silver-grey luminaire body, LED							
Sanesca W2 LED 2600-830...03	63 376...	...51	...40	2,500 lm	A++/A+/A	26	3.9
Sanesca W2 LED 2600-840...03	63 377...	...51	...40	2,600 lm	A++/A+/A	26	3.9
Sanesca W2 LED 4600-830...03	63 362...	...51	...40	4,600 lm	A++/A+/A	48	3.9
Sanesca W2 LED 4600-840...03	63 363...	...51	...40	4,800 lm	A++/A+/A	48	3.9

• IK02/0.2 J 650 °C

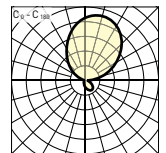
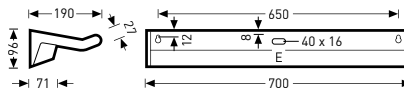
LED wall luminaires with indirect distribution ambient and night light and direct distribution reading light (without function module)



Reference	TOC	ETDD...	ET...		EEC	W	≈kg
White luminaire body, LED							
• Sanesca W3 LED 4600-830...01	63 806...	...51	...40	4,600 lm	A++/A+/A	48	4.5
Sanesca W3 LED 4600-840...01	63 807...	...51	...40	4,800 lm	A++/A+/A	48	4.5
Silver-grey luminaire body, LED							
Sanesca W3 LED 4600-830...03	63 808...	...51	...40	4,600 lm	A++/A+/A	48	4.5
Sanesca W3 LED 4600-840...03	63 809...	...51	...40	4,800 lm	A++/A+/A	48	4.5

• IK02/0.2 J 650 °C

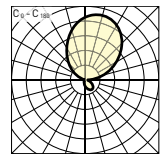
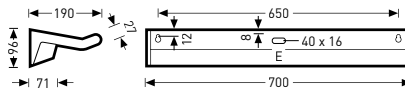
LED wall luminaires with indirect distribution ambient and night light and direct distribution reading light with rocker switch and socket (without function module)



Reference	TOC	ETDD...	ET...		EEC	W	≈kg
White luminaire body, LED							
• Sanesca W3-S1/R LED 4600-830...01	63 364...	...51	...40	4,600 lm	A++/A+/A	48	5.9
Sanesca W3-S1/R LED 4600-840...01	63 365...	...51	...40	4,800 lm	A++/A+/A	48	5.9
Silver-grey luminaire body, LED							
Sanesca W3-S1/R LED 4600-830...03	63 366...	...51	...40	4,600 lm	A++/A+/A	48	5.9
Sanesca W3-S1/R LED 4600-840...03	63 367...	...51	...40	4,800 lm	A++/A+/A	48	5.9

• IK02/0.2 J 650 °C

LED wall luminaires with indirect distribution ambient and night light and direct distribution reading light with pull-cord switch and socket (without function module)

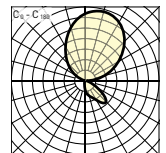
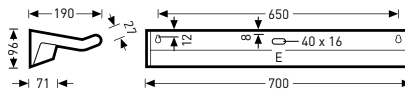


⊕ CE IP40

Reference	TOC	ETDD...	ET...		EEC	W	≈kg
White luminaire body, LED							
• Sanesca W3-S2/R LED 4600-830...01	63 368...	...51	...40	4,600 lm	A++/A+/A	48	4.5
Sanesca W3-S2/R LED 4600-840...01	63 369...	...51	...40	4,800 lm	A++/A+/A	48	4.5
Silver-grey luminaire body, LED							
Sanesca W3-S2/R LED 4600-830...03	63 370...	...51	...40	4,600 lm	A++/A+/A	48	4.5
Sanesca W3-S2/R LED 4600-840...03	63 371...	...51	...40	4,800 lm	A++/A+/A	48	4.5

• IK02/0.2 J 650 °C

LED wall luminaires with indirect distribution ambient and night light and direct distribution reading/examination light (large function module)



⊕ CE IP40

Reference	TOC	ETDD...	ET...		EEC	W	≈kg
Silver-grey luminaire body, LED							
• Sanesca W4-L20/R LED 4900-830...03	64 977...	...40	-	4,900 lm	A++/A+/A	51	6.3

• IK02/0.2 J 650 °C

TRILUX GmbH & Co. KG

Heidestraße · D-59759 Arnsberg
Postfach 19 60 · D-59753 Arnsberg
Tel. +49 29 32.3 01-0
Fax +49 29 32.3 01-3 75
sales@trilux.com · www.trilux.com

TRILUX LIGHTING LIMITED

TRILUX HOUSE, Winsford Way
Boreham Interchange
Chelmsford, Essex
CM2 5PD
Tel. +44 1245 463463
Fax +44 1245 462646
info.co.uk@trilux.com · www.trilux.com

